

PLAN BCP 43922
 REF. # BB1246900
 Deposited in the Land Title Office at New Westminster, B.C.
 this 26 day of FEB., 2010

Larry Blaschuk REGISTRAR

PLAN OF SUBDIVISION OF PART OF THAT PART OF D.L. 71, CARIBOO DISTRICT, AS SHOWN ON PLAN A171 AND OF PART OF PARCEL A (C4643) OF D.L. 71, CARIBOO DISTRICT.

B.C.G.S. 93B.020

The intended plot size of this plan is 864 mm in width by 560 mm in height when plotted at a scale of 1:1000

LEGEND

Integrated Survey Area No. 54, City of Williams Lake, NAD83 (CSRS)

Grid bearings are derived from observations between geodetic control monuments 98H2226 and 98H2237 and are referred to the control meridian of UTM Zone 10 (123° W. longitude).

This plan shows horizontal ground level distances except where otherwise noted. To compute grid distances multiply ground level distances by the combined factor 0.999551.

This plan lies within the Cariboo Regional District. This plan lies within the City of Williams Lake.

- ⊙ Control Monument
- ⊙ Standard Capped Post Found
- Standard Iron Post Found
- Standard Iron Post Placed
- Lead Plug Found

Approved under the Land Title Act this 1 day of February, 2010

[Signature]
 Approving Official - City of Williams Lake

I, Roger D. Galois, a British Columbia Land Surveyor of Kelowna, in British Columbia, certify that I was present at, and personally superintended the survey represented by this plan and that the survey and plan are correct. The field survey was completed on the 30th day of March, 2009. The plan was completed and checked and the checklist filed under #95454, on the 20th day of May, 2009.

[Signature] B.C.L.S.

OWNER
 BCR Properties Ltd.
 (Incorporation No. 278246)

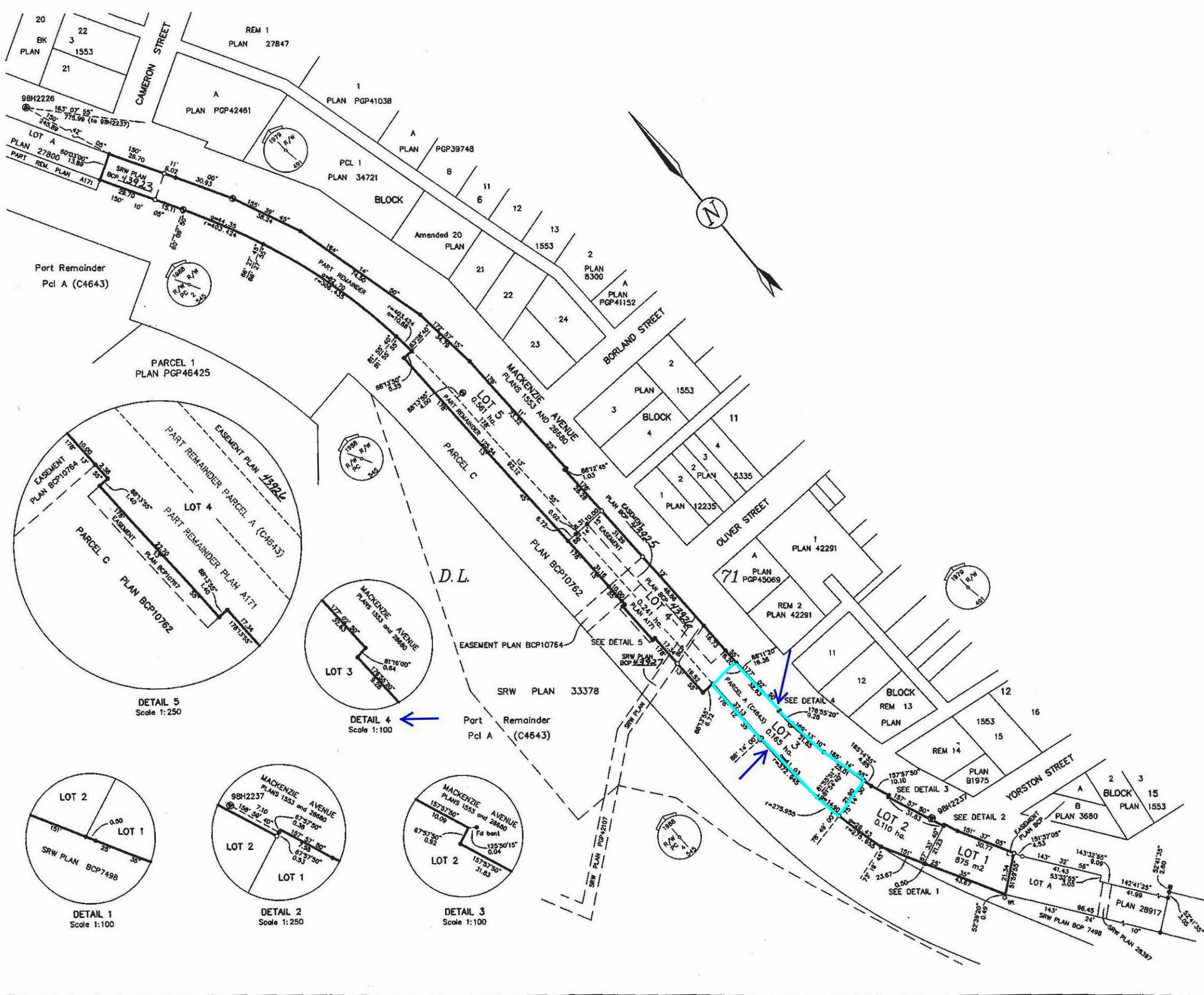
[Signature]
 AUTHORIZED SIGNATORY
 Name: John Lusney
 Position: President

WITNESS
[Signature]
 NAME: Chris Dawson
 OCCUPATION: Supervisor Surveys & Crossings
 ADDRESS: #600-221 West Esplanade
 North Vancouver, B.C.
 V7M 3J3

[Signature]
 Reviewed and verified correct
 Supervisor of Surveys and Crossings
 #884A

MMM GROUP
 MMM Geomatics BC
 Suite 101 - 389 Queensway Ave.
 Kelowna, BC V1Y 8E6
 L 250.889.1334
 FILE: 8695.07.1 DWG. No.: 03-10

ORIGINAL





DETAIL 4
Scale 1:100

Part Remainder
Pcl A (C4643)